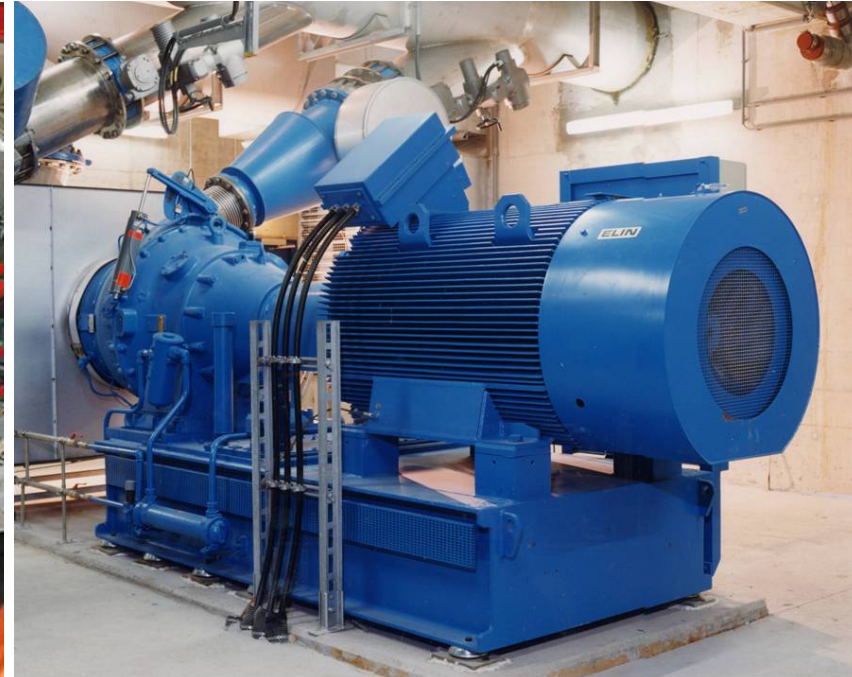




We keep the world in motion.

Compressor Drives
Including Oil & Gas Business

Compressor Drives



We provide electric drives for compressors. Our know-how and flexibility stand for solutions with the lowest influence at the grid and the best efficiency.

Our focus is at asynchronous motors for the power ranges from 200 kW up to 25 MW for voltage levels from 3 up to 15 kV with a speed range from 300 up to 3,600 rpm.



CHALLENGES

- Solutions with high efficiency
- Solutions for start up with the lowest impact at the grid
- Special mechanical or electrical requirements

Compressor Drives

Air Cooled Motors



Surface cooled motors
200 kW up to 2,500 kW



Tube Cooled motors
200 kW up to 8,000 kW



Air Cooled motors IC611
500 kW up to 12,000 kW

Water Cooled Motors



Water Jacket Cooled motors
350 kW up to 2500 kW



Water cooled with heat exchanger
600 kW up to 30,000 kW



Slip ring motors
500 kW up to 15,000kW

- **Asynchronous electric motors for compressor applications**

Rated power from 200 kW up to 30,000 kW

Medium / high voltage

Air- and water cooled motors

Customer specific solutions



LINDE Donawitz, Austria 1997 & 2000



MAN Rasfuel, Qatar 2005

- **Slip ring motors**

Rated power from 500 kW up to 15,000 kW

Weak grids



Biochemie Kundl, Austria 1998



POSCO, South Korea 2005

- **Water Jacket Cooled Motors**

Rated power from 350 kW up to 2,500 kW

Low Water Consumption

Low noise emission

No water leakages

Low required space



Kläranlage Hetlingen Germany, 2000



AXIMA Refrigeration Climespace Tokyo, 2005

- **Motors for hazardous areas**

EEx nA cheapest solution applicable zone 2

EEx p pressurized housing applicable for zone 1 and zone 2

EEx e increased safety applicable for zone 1 and zone 2



BURCKHARDT BOREALIS, Austria 2004



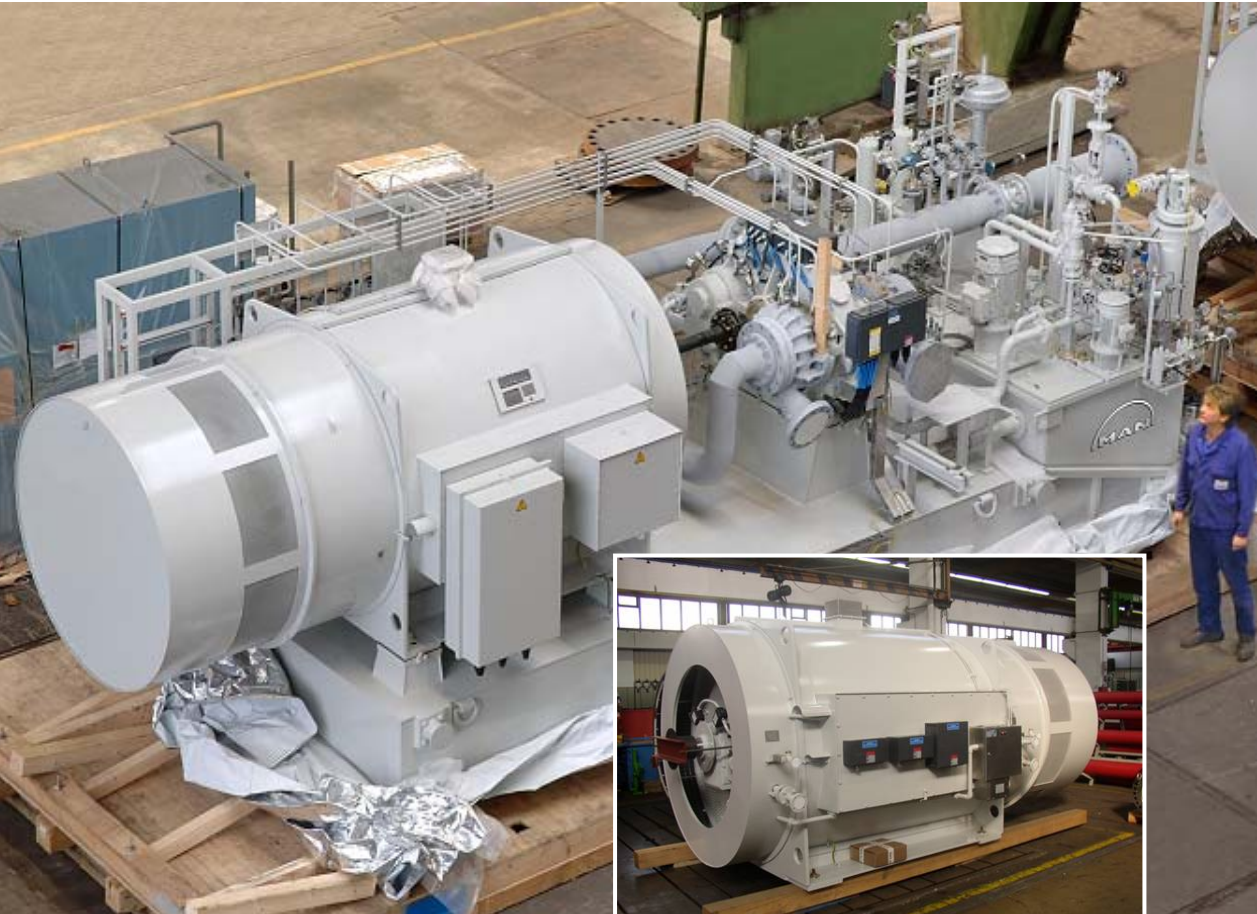
ELIN EBG Motoren GmbH is certified to produce motors according to the ATEX regulations.



BOREALIS Energas, Austria 2004

Project: **MAN Rasfuel**

Location: Qatar
Year: 2005



- Type: HKR-110 Z02
- Power: 3,075 kW
- Voltage: 6,600 V
- Cooling: Air
- Quantity: 3 pieces

- Application: Turbo Compressor

- Highlights EExp II A T3
83 dB(A)
Starting current
4,4-times In

Courtesy of MAN Turbo

Project: Air Separation Plant „Hassi Messaoud“

Location: Algeria

Year: 2001



- Type: HKM-156 D02
 - Power: 2,500 kW
 - Voltage: 6,000 V
 - Cooling: Water
 - Quantity: 1 piece
-
- Application: Turbo Compressor
 - Highlights: IP65
Operation in desert
60° Cel. Water temperature

Project: **Condea Augusta**

Location: Sicilia, Italy
Year: 2000



- Type: HKM-171D04
- Power: 5,500 kW
- Voltage: 6,000 V
- Cooling: Water
- Quantity: 1 piece

- Application: Compressor

- Highlights: EEx p
Low noise emission (83dB under load)
Low starting current (4.4-times at 80% of the nominal voltage)



Peter GUGGANIG

**Technology and Sales
Compressor Drives**

Phone: +43 (0) 3172 / 90 606-3191
Fax: +43 (0) 3172 / 90 606-1500
Mobile: +43 (0) 664 / 80 838 3191
peter.gugganig@elinmotoren.at



Günther MAIER

**Technology and Sales
Compressor Drives**

Phone: +43 (0) 3172 / 90 606-2731
Fax: +43 (0) 3172 / 90 606-1500
Mobile: +43 (0) 664 / 80 838 2731
guenther.maier@elinmotoren.at